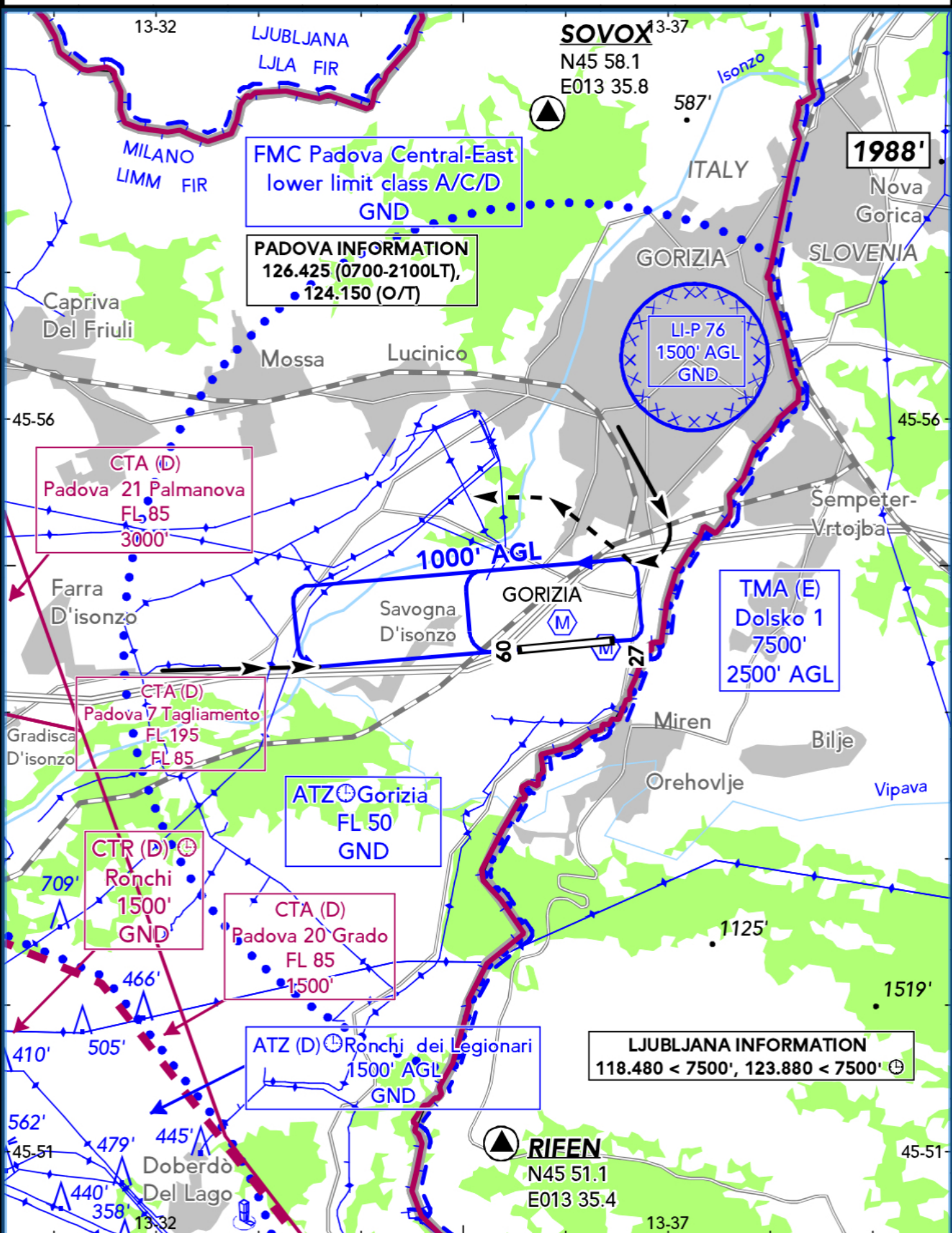


BRIEFING STRIP™

VAR 4°E

LOCATION Elev 207' /63m N45 54.4 E013 36.0	FIS PADOVA INFORMATION 126.425 ⁽¹⁾ 124.150 ⁽²⁾
AIRSPACE PADOVA RADAR 120.725 ^{(3) (4)}	FMC MONITOR 119.175 ⁽⁵⁾ SQUAWK 4776 ⁽⁵⁾
RADIO GORIZIA RADIO 119.855	

(1) 0700-2100LT (2) O/T (3) Padova CTA (4) VFR ATC clearance via PADOVA FIS
 (5) Padova Central-East FMC Area



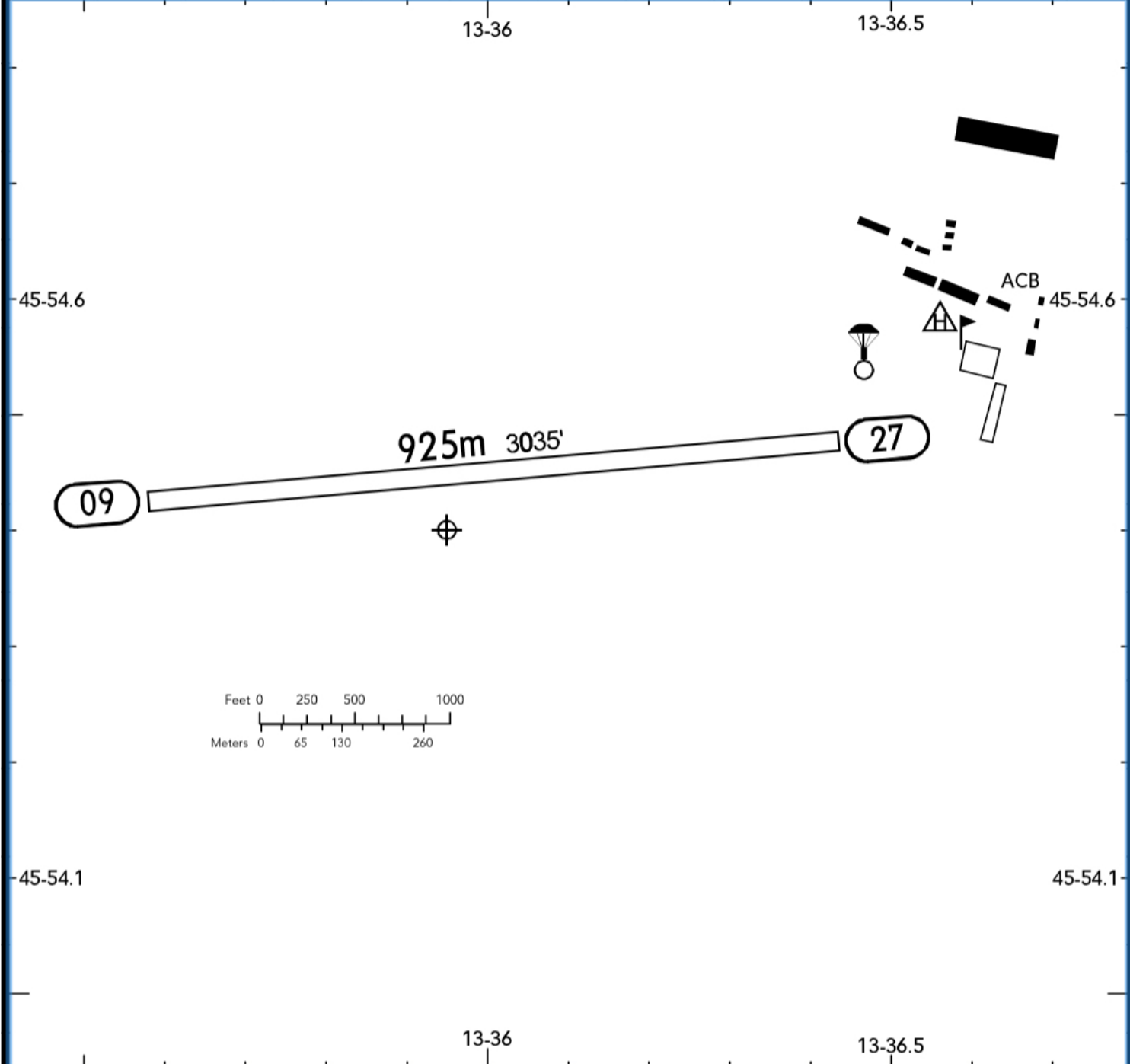
km
Digital Geography: © 2014 AND
Forestry: © European Union, 1995-2015

BRIEFING STRIP™

LOCATION
Elev **207'** /63m
N45 54.4 E013 36.0

RADIO
GORIZIA RADIO **119.855**

ADMITTED AIRCRAFT

RWY No	Dimension (m) - Surface	TORA (m)	LDA (m)	Strength	Lights
09 (090°) 27 (270°) ①	925 x 30 Grass				---

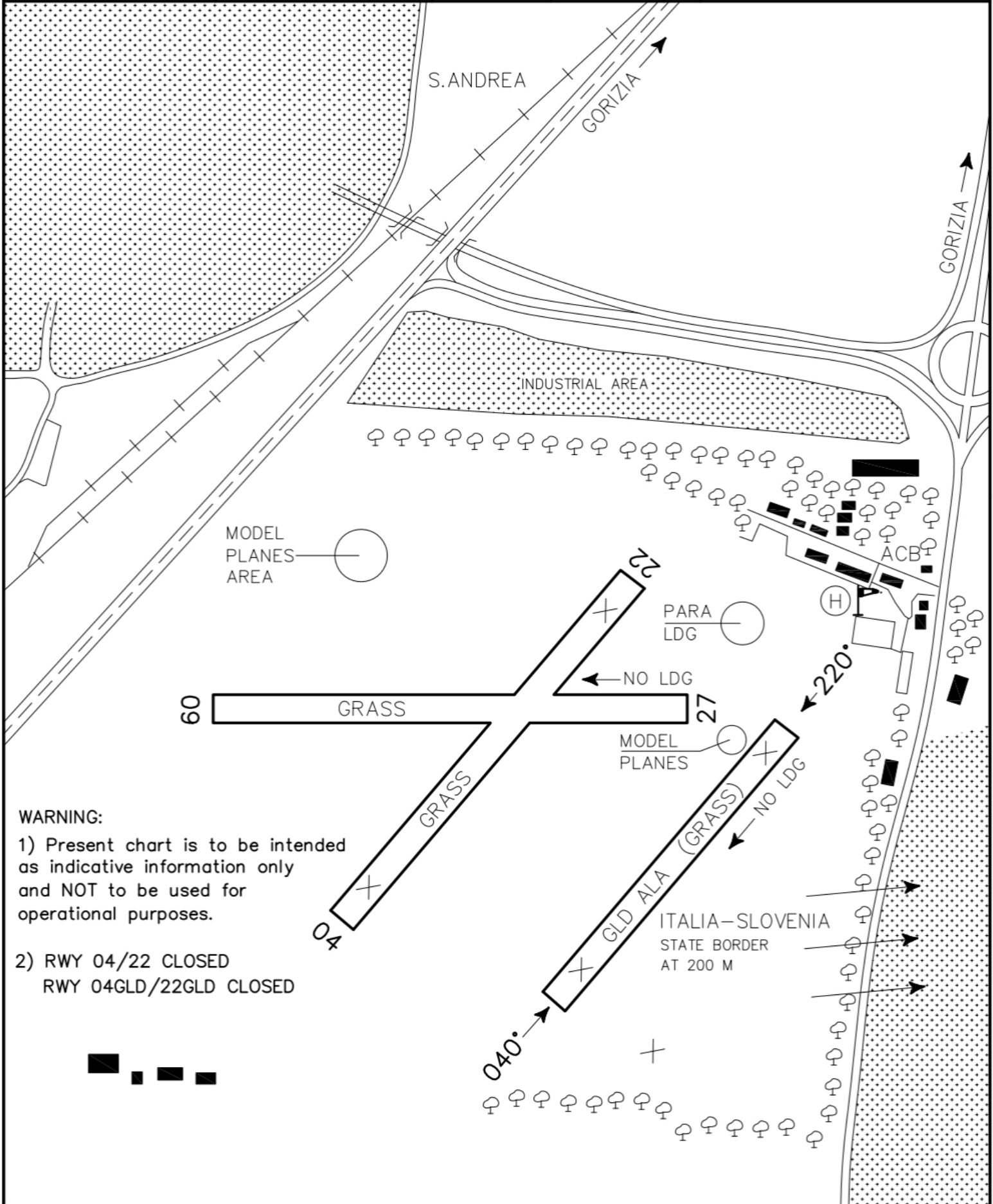
① LDG prohibited

NOTE: Refer to Trieste (LIPQ) Area Information.
 Do not penetrate State border of Slovenia 200m E of AD.
 Flying activity prohibited when fire fighting service not AVBL, except for winched gliders.

AERODROME LANDING CHART

AD Operative Hours	Traffic Circuit	Gorizia Radio	Aerodrome Elevation	L I P G	GORIZIA 45°54'24" N 013°35'57" E *
See relevant AD pages	See relevant AD pages	CH 119.855	207 Ft		

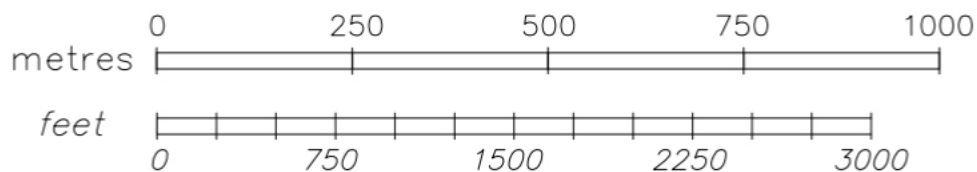
CHANGE: RWYs 04/22 AND 04GLD/22GLD CLOSED

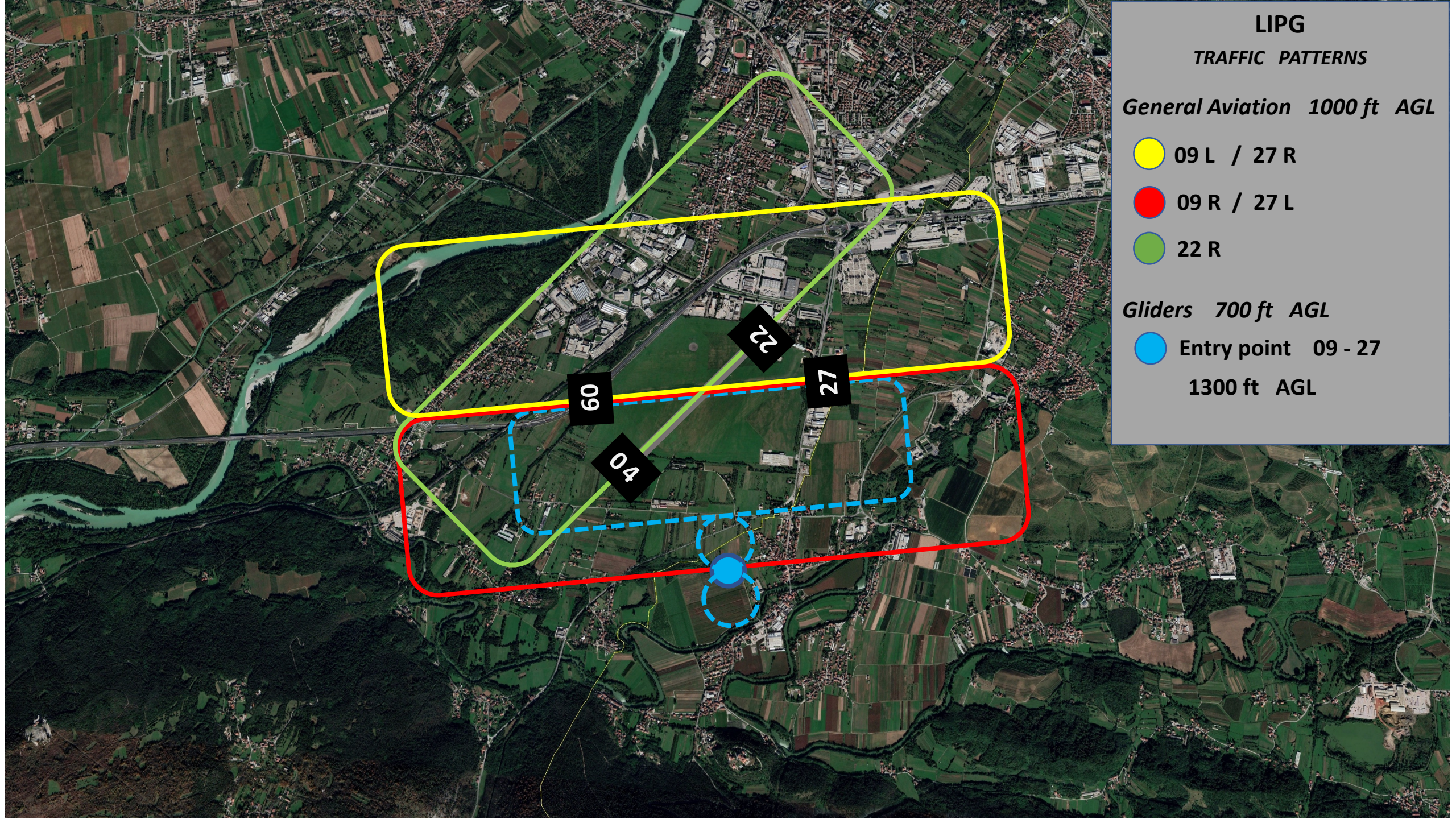


WARNING:

1) Present chart is to be intended as indicative information only and NOT to be used for operational purposes.

2) RWY 04/22 CLOSED
RWY 04GLD/22GLD CLOSED





LIPG

TRAFFIC PATTERNS

General Aviation 1000 ft AGL

● 09 L / 27 R

● 09 R / 27 L

● 22 R

Gliders 700 ft AGL

● Entry point 09 - 27
1300 ft AGL